

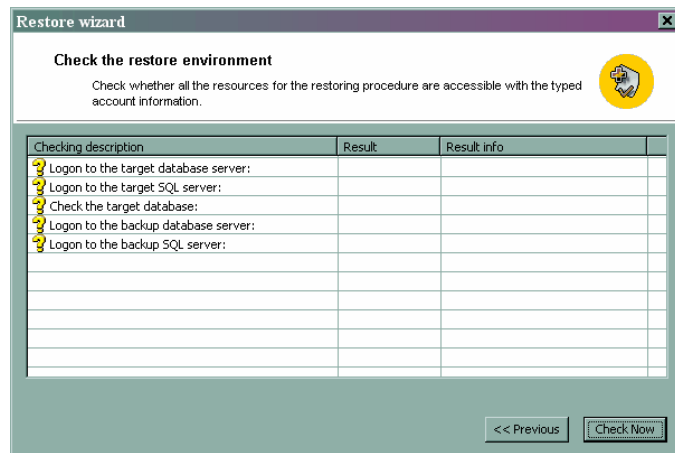
# TABLE OF CONTENTS

Purpose.....	2
Operations in Administrator Application.....	3
Program start.....	3
Exit from Administrator Application.....	6
Users mode.....	6
New user.....	8
Delete a user.....	10
Properties.....	10
Change password.....	10
Close.....	10
Workstations mode.....	11
Add workstation.....	11
Delete workstation.....	12
Properties.....	12
Close.....	12
Log mode.....	13
Install filter.....	14
Remove filter.....	15
Close.....	15
Removed specimens mode.....	16
Cancel.....	18
Server Management mode.....	19
Service management.....	21
Users.....	21
Correlation tasks.....	22
Configuring.....	23
Client Configuring mode.....	25
Blocked Check mode.....	28
Integrity Check mode.....	29
Database Backup mode.....	31
Database Restore mode.....	38

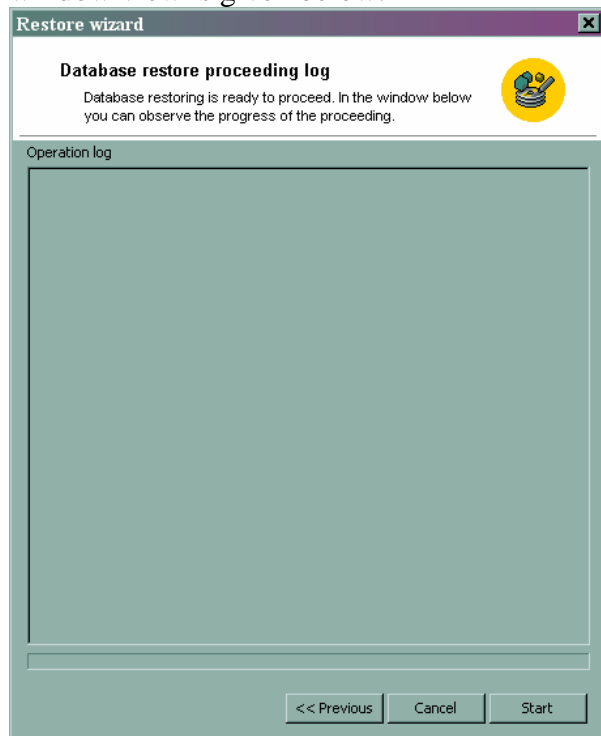
## Purpose

**CONDOR Administrator** Application (hereinafter referred to as the **Administrator**) is a part of special software designed for CONDOR BIC (Ballistic Identification Centre) operators' account control, execution of operations on checking and maintaining of database (DB) integrity, control of the bullet and cartridge case image storage subsystem, remote control of complex customers, control of correlation server, storage server, FTP server, backup server as well as keeping a log-book for actions to be performed by operators within the framework of expert workstations.

**Administrator** Application functions under control of Microsoft Windows 2000/XP/2003 operating system.



10. In the opening window, press the **Start** key to begin restoration. The progress of restoration process will be displayed in the window. In order to stop the process, press the **Abort** key (It may lead to unpredicted consequences). The window view is given below:

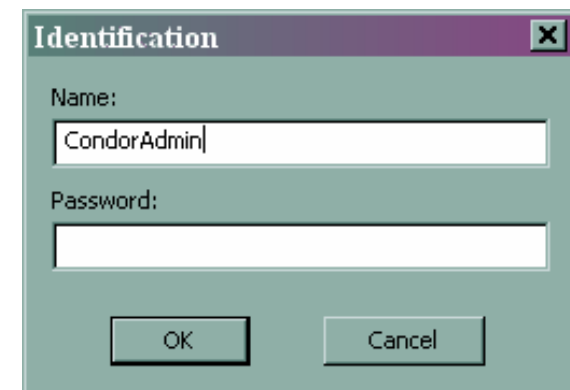


## Operations in Administrator Application

### Program start

In order to start the program, select **Administrator** item in the operating system's program menu or on the desktop and double click the left mouse button or ENTER key on the keyboard to run the application.

In reply to the request of login name and password, enter the account name and specified password.

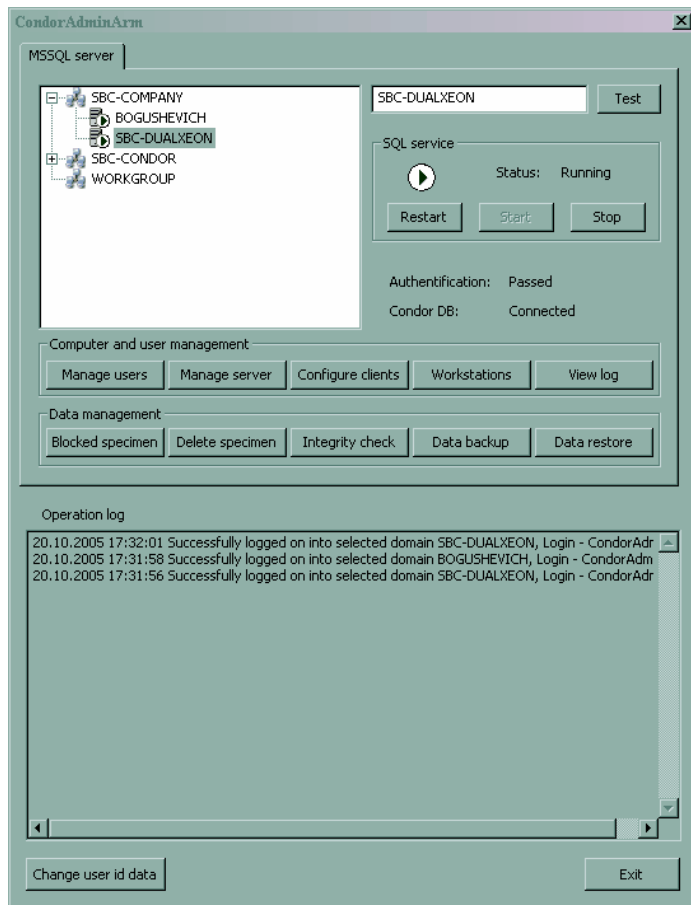


Thereafter the **Administrator** program will use the data being entered for connection with servers. If necessary, the values being entered can be modified by pressing the **"Change user id data"** key in the program's main window.

After user identification, the **Administrator** Application will be loaded, then you will be prompted to select a server in the local area network for further work.

The client software of the **Administrator** Application is arranged in the form of a dialogue application.

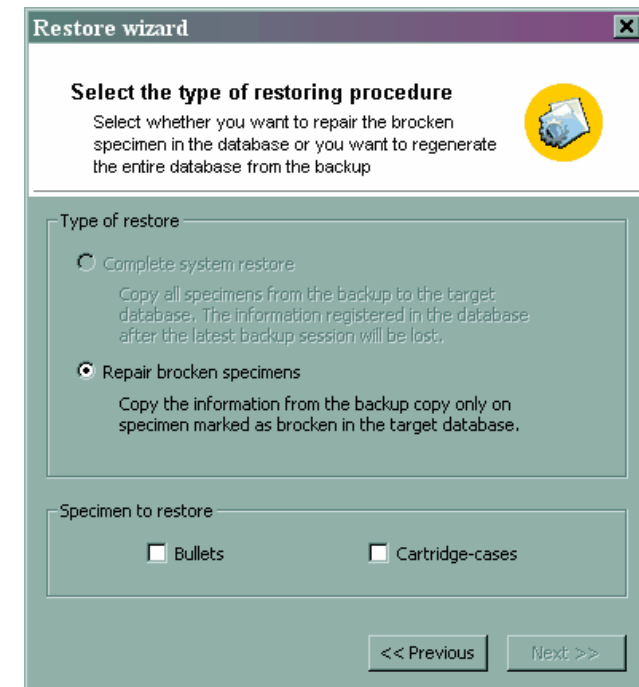
The general view of the **Administrator** Application's main window is given below.



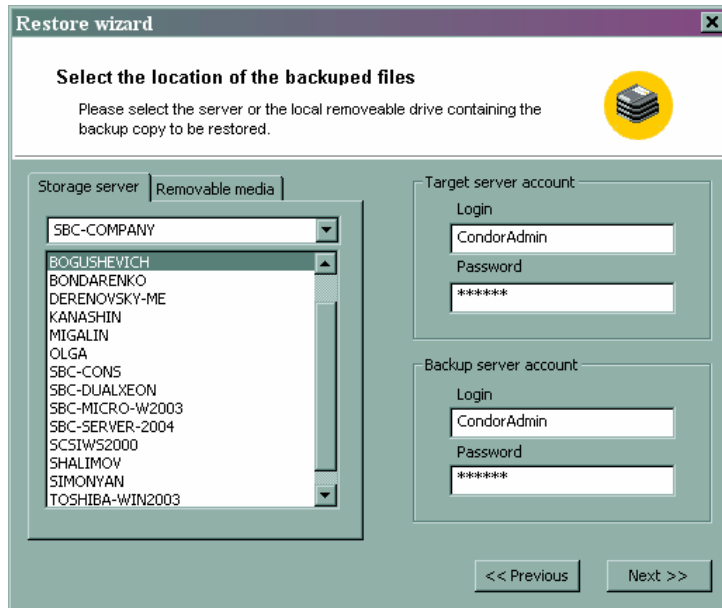
The following is displayed in this window:

- Tree-like structure of domains, workgroups and servers operating in the local area network. In case of a situation arising when the required server is not displayed in the list, there is a possibility of direct connection to it by typing the server's name in the field being located in the upper part of the window and pressing the “**Test**” key.
- Group of elements relating to SQL server management:
  - Status field – displays the current state of the SQL server;
  - Restart key – reboots the SQL server;
  - Start key – starts the SQL server;

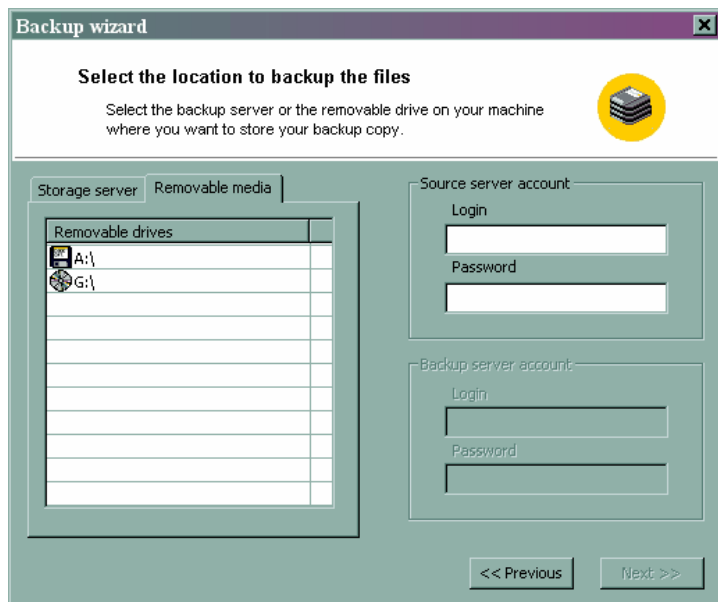
6. Press the **Next>>** key.
7. In the opening window, select the restoration type:
  - a. Full restoration – restoration with the removal of all current information (it becomes accessible if full copying has been performed on the source server).
  - b. Restoration of damaged specimens (records in the database and files being stored on the server).
8. Select the type of records to be subject to restoration (Bullet file, Cartridge case file). Then press the **Next>>** key. The window view is given below.



9. In the opening window, press the **Check Now** key to verify the data being entered. If necessary, press the <<**Previous** key, change the data being entered and conduct verification again.



5. In order to restore data from removable storage media, select **Removable media** tab. Type the user account name and password to get access to the server being restored.



- Stop key – stops the SQL server;
  - Authentication field – displays the identification progress status in connecting to the server being selected;
  - Condor DB field – displays the status of connection to the database.
- Group of keys relating to computer and user management:
  - Manage users – performs start of the **User management** mode;
  - Manage server - performs start of the **Server management** mode;
  - Configure clients – performs start of the Client management mode;
  - Workstations – performs start of the Workstations mode;
  - View log – performs start of the Log view mode.
- Group of keys relating to data management:
  - Blocked specimen - performs start of the Blocked checks mode;
  - Delete specimen - performs start of the Delete checks mode;
  - Integrity check - performs start of the Integrity check mode;
  - Data backup - performs start of the Backup copying mode;
  - Data restore - performs start of the Backup restore mode.
- Operation log field – displays all actions taken by the Administrator program during the current working session/
- Change user id data key – change of the data being entered (login and password), which are used for connection to the server and execution of all operations.
- Exit – exit from the Administrator program.

## Exit from the Administrator Application

The exit is carried out by the method being standard for Windows-applications:

- by pressing the **Exit** key in the main window;
- by pressing the application closing service key;
- by pressing the Alt+F4 key combination.

**NOTE.** The exit is impossible in executing critical operations such as database backup copying and restore.

## Users mode

### User account management

The operator account conforms to one of logins of the domain, in the which the complex software is functioning.

The following is established for the user account:

- list of workplaces, which start is permitted for the given user;
- list of domain workstations, from which the user can start the workplace software;
- software access mode.

The complex software can be started in one of the following modes:

- standard mode – the use has full permissions to perform functions;
- read-only mode – the user can only view data without any permission to edit them.

The application name, workstation name and access level determine the permissions for work as a part of the complex for each specific account.

Several permissions can be assigned for the same account.

Only one of the permissions can be assigned for an account for one application provided their functioning on the same workstation.

Several permissions can be assigned for an account for different application or provided functioning on different workstations.

The Users mode can be activated by pressing the **Manage**

3. In the opening window, specify the server, to which it is necessary to restore the database, specify the user name and password of the administrative account on this server, indicate the name of restored database and the necessity of its generation. Press the **Next>>** key. The window view is given below.

**Restore wizard**

Select the database server to be restored

Select the BIS Condor database server to be restored or regenerated.

SQL server

Domain	Server
SBC-COMPANY	BOGUSHEVICH
SBC-CONDOR	SBC-DUALXEON
WORKGROUP	SBC-MICRO-W2003
	SBC-SERVER-2004
	TOSHIBA-WIN2003

Administrative account login info

Login:  Password:

Database to be restored

Name of the database:

☐ Generate database to be restored

<< Previous Next >>

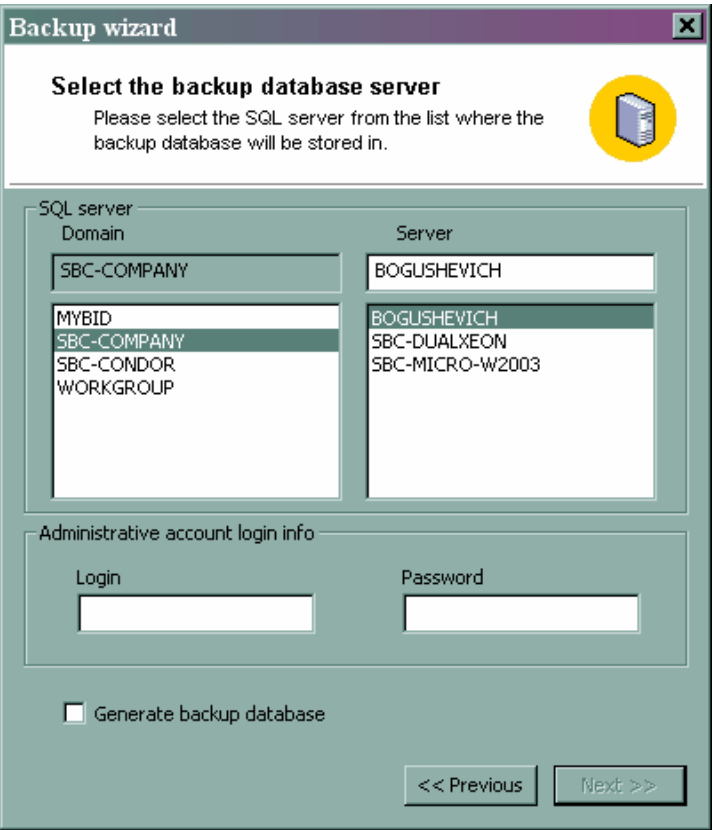
4. In order to restore data from the file server, press the **Storage server** tab and select the file server name. Type the user account login and password for the server being restored and for the file server.

## Database Restore mode

The mode is designed for database restoration in case of damage, data loss, etc.

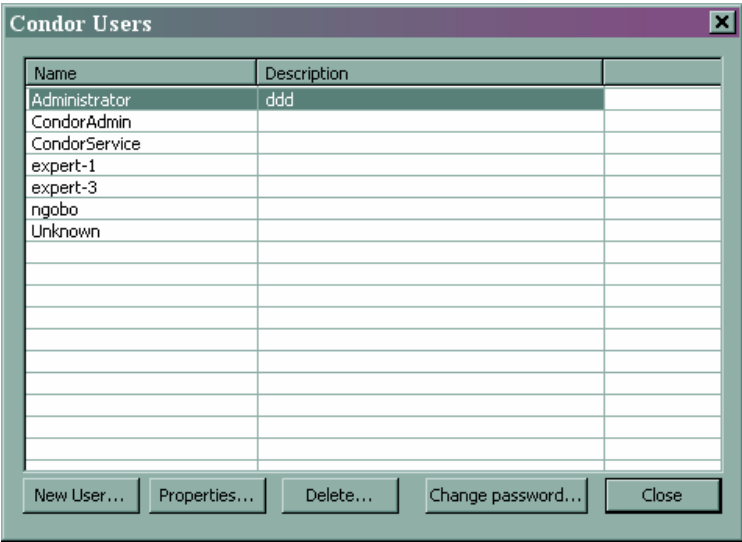
The access to this mode is carried out by pressing the **Data restore** key in the main program window.

1. In the opening window, select a server, on which the database backup copy is stored.



2. Type the user name and password of the administrative account of the server. If necessary, specify the necessity of database generation to the backup copying program (in case of restoration to a server having no databases). Press the **Next>>** key.

**users** key in the main window; in doing so a window with the list of operator accounts will open.



The following is displayed in this window:

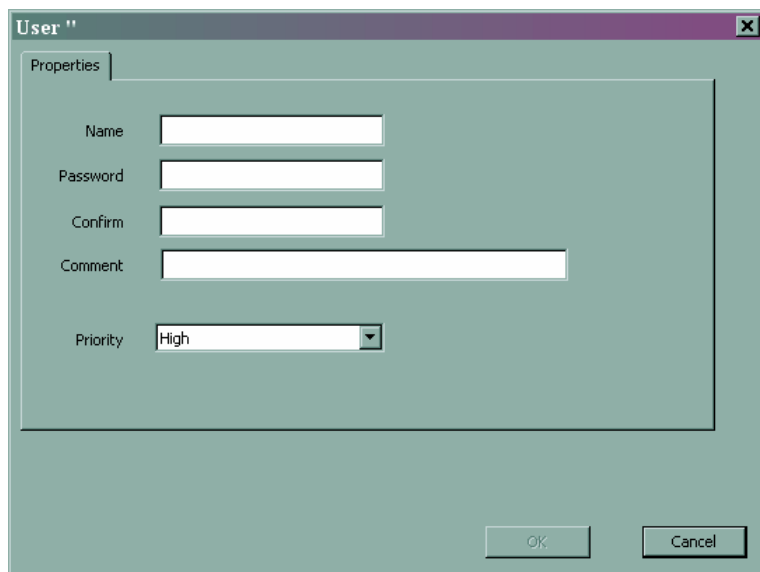
- List of users with comments.
- New user...key - creation of a new user.
- Properties... key – user properties management (assignment of permissions, modification of data).
- Delete... key – user deletion.
- Change password key – change of the user password being selected.
- Close key – exit from the mode.

The execution of operations with the list is carried out by pressing the corresponding key in the window.

**ATTENTION!** If any menu item or managing element of the dialogue window is inaccessible, then it means that the operation is disabled in the current context on the basis of the operating logic of the application or the operation is disabled in accordance with the access level.

## New user

It calls the window for entering the account data.



The 'User ' dialog box has a 'Properties' tab. It contains the following fields: 'Name' (text input), 'Password' (text input), 'Confirm' (text input), 'Comment' (text input), and 'Priority' (dropdown menu set to 'High'). At the bottom are 'OK' and 'Cancel' buttons.

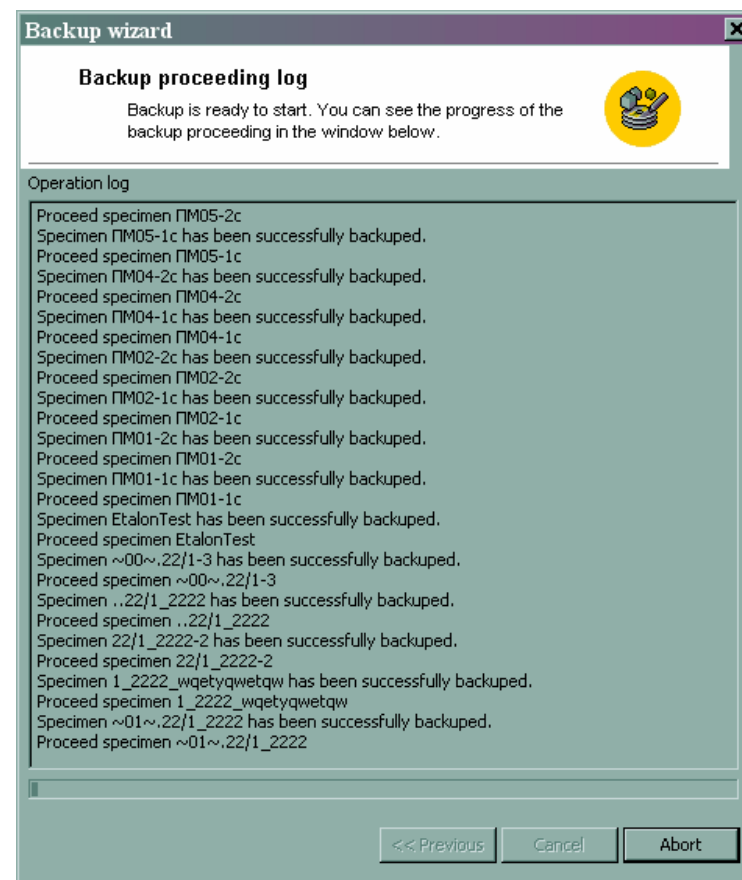
Type the account name in the **Name** field. The account name will be added into the list of users of the domain, in which the complex is operating.

Type the required password in the **Password** and **Confirm** fields. **Comment** field – an arbitrary non-obligatory text.

**Priority** field – the correlation task priority. In case of a task with a higher priority appearing, the tasks with lower priorities will be suspended and will continue running after termination of the task with the higher priority.

**OK** key – saving of the data being entered or changes made and closing of the window.

**Cancel** key – refusal to save the changes made and closing of the window.



The 'Backup wizard' window has a title bar with a close button. Below the title bar is a section titled 'Backup proceeding log' with a yellow icon of a hard drive and a green arrow. The text says: 'Backup is ready to start. You can see the progress of the backup proceeding in the window below.' Below this is an 'Operation log' section with a list of backup progress messages. At the bottom are '<< Previous', 'Cancel', and 'Abort' buttons.

**Backup proceeding log**

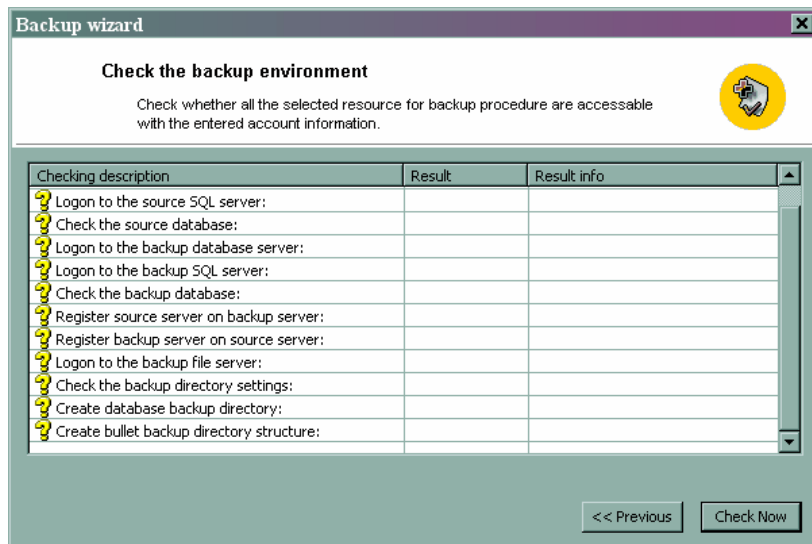
Backup is ready to start. You can see the progress of the backup proceeding in the window below.

**Operation log**

- Proceed specimen ПМ05-2c
- Specimen ПМ05-1c has been successfully backed up.
- Proceed specimen ПМ05-1c
- Specimen ПМ04-2c has been successfully backed up.
- Proceed specimen ПМ04-2c
- Specimen ПМ04-1c has been successfully backed up.
- Proceed specimen ПМ04-1c
- Specimen ПМ02-2c has been successfully backed up.
- Proceed specimen ПМ02-2c
- Specimen ПМ02-1c has been successfully backed up.
- Proceed specimen ПМ02-1c
- Specimen ПМ01-2c has been successfully backed up.
- Proceed specimen ПМ01-2c
- Specimen ПМ01-1c has been successfully backed up.
- Proceed specimen ПМ01-1c
- Specimen EtalonTest has been successfully backed up.
- Proceed specimen EtalonTest
- Specimen ~00~.22/1-3 has been successfully backed up.
- Proceed specimen ~00~.22/1-3
- Specimen ..22/1\_2222 has been successfully backed up.
- Proceed specimen ..22/1\_2222
- Specimen 22/1\_2222-2 has been successfully backed up.
- Proceed specimen 22/1\_2222-2
- Specimen 1\_2222\_wqetyqwetqw has been successfully backed up.
- Proceed specimen 1\_2222\_wqetyqwetqw
- Specimen ~01~.22/1\_2222 has been successfully backed up.
- Proceed specimen ~01~.22/1\_2222

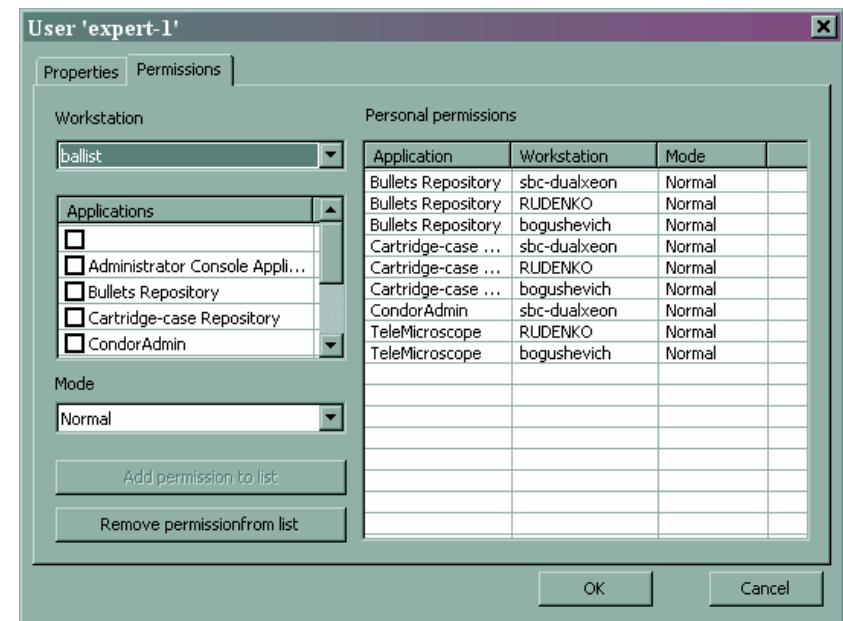
In order to stop the backup copying, press the **Abort** key.





7. Press the **Check Now** key in order to check the readiness for backup copying. If certain fields have not passed checking, press the <<**Previous** key and change the data being entered, then try again.
8. If the check has passed successfully, press the **Start** key in the opening window. The backup program log will be displayed in the window. The window view is given below.

**NOTE.** After saving of the data being entered, access to the **Permissions** tab will open.



The permissions to operators are assigned by means of this tab. In order to assign a new permission to the current operator, it is necessary to do the following:

- select an application from the list;
- select the required workstation from the list of available workstations;
- select the operating mode being assigned;
- press the **Add permission to list** key.

In order to remove the permission, it is necessary to do the following:

- select a permission from the list of registered permissions;
- press the **Remove permission from list** key.

### **Delete a user**

In order to delete an operator account, take the following steps:

- select the required account;
- press the **Delete** key;
- conform the necessity of deletion or cancel deletion of the account.

### **Properties**

In order to change parameters of an account or assignment / deletion of user permissions, take the following steps:

- select the required account;
- press the **Properties** key;
- make changes of account parameters in the opening window;
- make correction of the user permissions on the **Permissions** tab;
- confirm the necessity of saving of changes or cancel the changes.

The actions are the same as in adding a user account.

**NOTE.** No correction of operator account name is allowed in the editing mode.

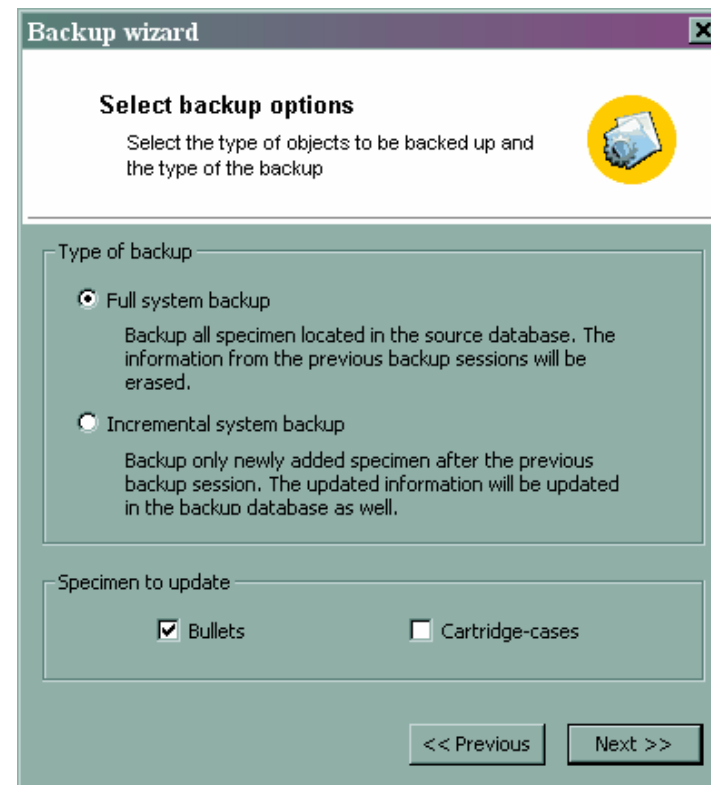
### **Change password**

In order to change the operator account password, take the following steps:

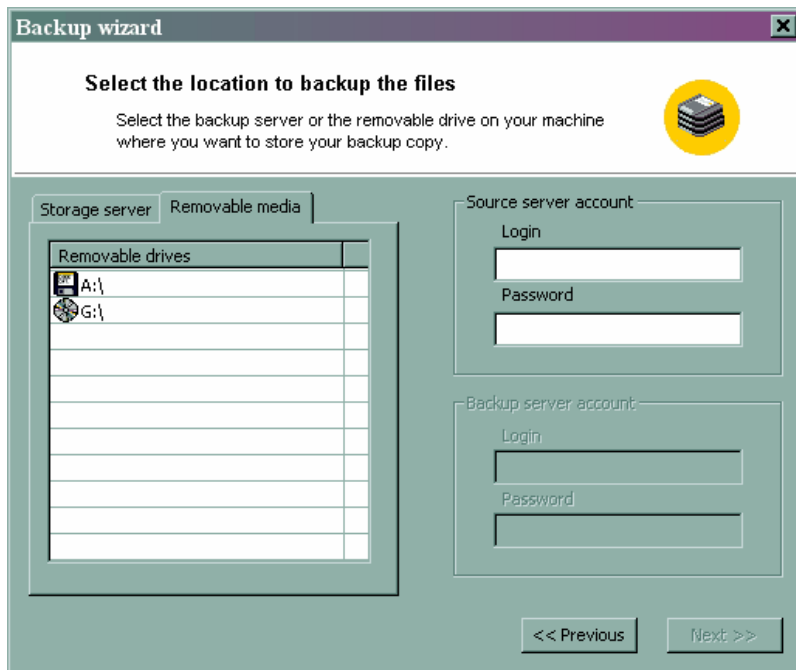
- select the required account;
- press the **Change password** key;
- type a new password in the opening window as well as repeat it in the confirmation field;
- confirm the necessity of password change (**OK**) or cancel the password changes (**Cancel**).

### **Close**

It finished the work in the “**Users**” mode and closes the corresponding window. Press the **Close** key to exit from the mode.



4. Select the type of backup copying:
  - a. Full copying – All specimens from the initial database will be copied and the information about previous backup copying sessions will be removed.
  - b. Increment copying – Only those specimens that have been added and updated since the moment of last copying will be copied.
5. Select the type of specimens for backup copying (Bullet file, Cartridge case file).
6. Press the **Next>>** key.

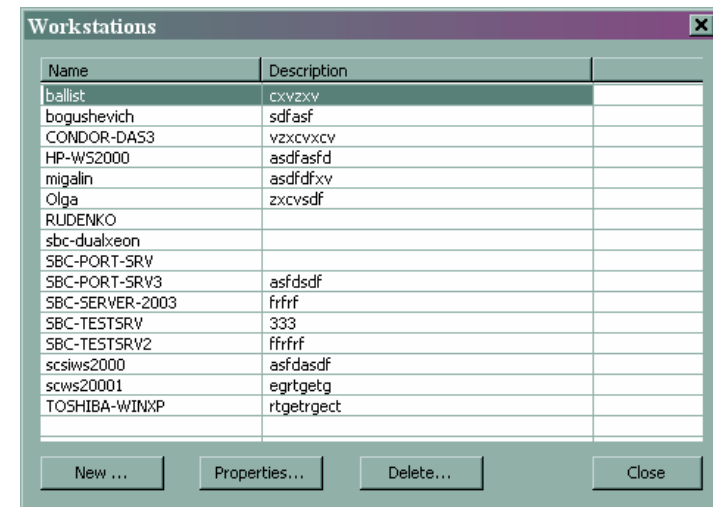


2. In order to save data on a removable storage media, select the **Removable media** tab. Type the user account name and password to get access to the source server.
3. Press the **Next>>** key.

## Workstations mode

It provides management of complex workstation accounts. It is activated by pressing the **Workstations** key in the main window; in doing so, a window with the list of workstation accounts will open.

The operating sequence is similar to the **Users** mode.

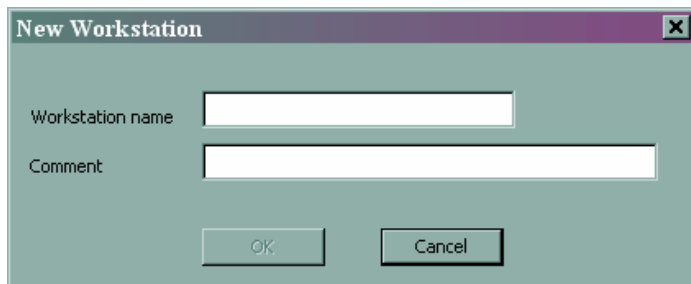


The following will be displayed in this window:

- :List of workstations with comments.
- **New ...** key – add a new workstation.
- **Properties...** key – workstation properties management (modification of data).
- **Delete...** key – delete a workstation from the list.
- **Close** key – exit from the mode.

## Add workstation

It calls the data input window in order to create a new account. Type the workstation account name in the “**Workstation name**” field. The account name will be added to the list of available complex workstations.



**Comment** field – an arbitrary non-obligatory text.

**OK** key – saving of the changes made and closing of the window.

**Cancel** – cancellation of the changes made and closing of the window.

### Delete workstation

In order to delete a workstation account, take the following steps:

- select the required account;
- press the **Delete** key;
- conform the necessity of deletion or cancel deletion of the account.

### Properties

In order to change parameters of a workstation account, take the following steps:

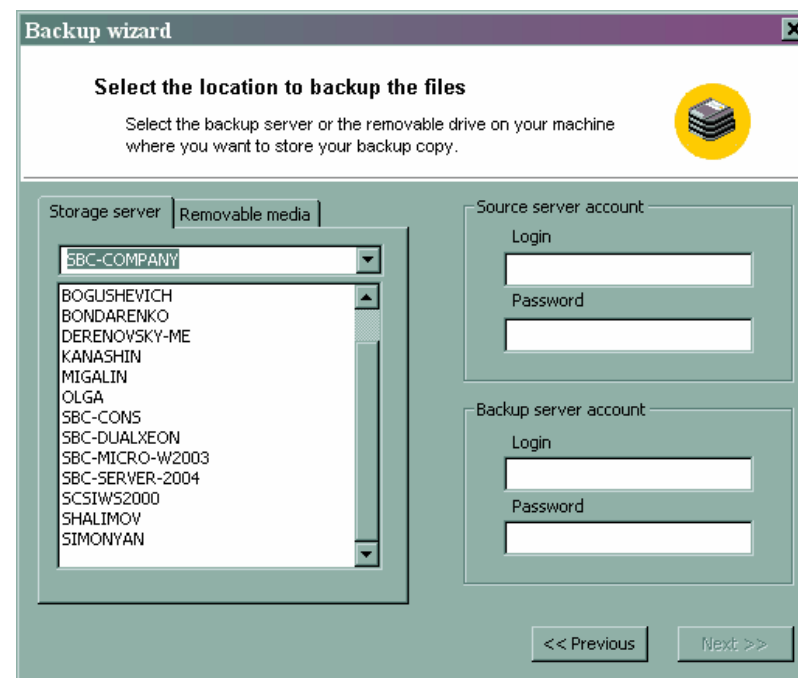
- select the required account;
- press the **Properties** key;
- make changes of account parameters in the opening window;
- confirm the necessity of saving of property changes (**OK**) or cancel the changes (**Cancel**).

### Close

It finished the work in the **Workstations** mode and closes the corresponding window. Press the **Close** key to exit from the mode.

- Password – account password.
- Generate backup database field – indicates the necessity of checking of creation of a database on the receiving server for its subsequent filling with data from the working database.
- <<Previous – return to the previous step.
- Next >> – transfer to the next step.

2) Select a server, which will be the receiving server. In conducting backup copying for the first time, it is necessary to mark the **Generate backup database** field. Type the user login and password to provide access to the receiving server and press **Next>>**.



1. In order to save data on the file server, press the **Storage server** tab and select a file server name. Type the user account name and password for the source server and for the file server.

- Accessible databases – in case of correct data being entered the program will display a list of accessible databases on the server being selected.
- Cancel – Cancel and exit from the mode.
- Next >> - transfer to the next step.

1) In the opening window, select a source server, from which the backup copying should be performed, type the login and password to provide access, select a database for copying and press **Next>>**.

The following will be displayed in the window:

- List of domains and workgroups in the local area network.
- List of servers in the local area network relating to the domain or workgroup being selected.
- Information about the administrator account for connection with the server being selected:
  - Login – account name;

## Log mode

It provides information on the workstation operations performed. It is activated by pressing the **Log** key in the main window after selection of the server, in doing so, the corresponding window will open.

The following data shall be included into the log:

- date and time of taking an action;
- user account name;
- name of workstation, from which the action was performed;
- name of application, in which the action was performed;
- name of proper operation executed by the operator;
- code of the operation execution result;
- note.

Date/Time	User	WS	APPID	Res	Description	Operation
2005-08-23 15:35:07	expert-3	CONDOR-DA53	TeleMicroscope	0		User login
2005-08-30 19:48:28	administrator	SCSWS2000	Cartridge-case Repository	0		User logout
2005-08-31 13:35:15	administrator	SCSWS2000	Cartridge-case Repository	0	U: administrator, P:*****	User login
2005-09-05 11:51:16	administrator	SCSWS2000	Cartridge-case Repository	0		User login
2005-09-08 18:57:55	administrator	SCSWS2000	Cartridge-case Repository	0		User logout
2005-09-12 12:24:20	administrator	SCSWS2000	Cartridge-case Repository	0	U: administrator, P:*****	User login
2005-09-15 12:24:27	administrator	SCSWS2000	Cartridge-case Repository	0	U: administrator, P:*****	User login
2005-09-26 11:15:26	Administrator	SBC-SERVER-2...		-1	U: Administrator, P:*****	User login
2005-09-30 16:35:26	CondoAdmin	SCSWS2000	Bullets Repository	-1	U: CondoAdmin, P:*****	User login
2005-09-30 16:36:55	Administrator	SCSWS2000	Bullets Repository	0		File item add
2005-09-30 16:35:53	Administrator	SCSWS2000	Bullets Repository	0	U: Administrator, P:*****	User login
2005-09-30 16:36:29	Administrator	SCSWS2000	Bullets Repository	0		File item add
2005-09-30 16:37:00	Administrator	SCSWS2000	Bullets Repository	0		File item add
2005-09-30 16:36:12	Administrator	SCSWS2000	Bullets Repository	0		File item add
2005-09-30 16:36:36	Administrator	SCSWS2000	Bullets Repository	0		File item add
2005-09-30 16:36:41	Administrator	SCSWS2000	Bullets Repository	0		File item add
2005-09-30 16:36:46	Administrator	SCSWS2000	Bullets Repository	0		File item add
2005-09-30 16:36:23	Administrator	SCSWS2000	Bullets Repository	0		File item add
2005-09-30 16:37:05	Administrator	SCSWS2000	Bullets Repository	0		File item add
2005-09-30 16:36:51	Administrator	SCSWS2000	Bullets Repository	0		File item add
2005-09-26 12:31:39	administrator	SCSWS2000	Cartridge-case Repository	0	U: administrator, P:*****	User login
2005-09-26 13:10:42	mic	SCSWS2000	Cartridge-case Repository	0	U: mic, P:*****	User login
2005-09-26 13:11:34	mic	SCSWS2000	Cartridge-case Repository	0		User logout
2005-09-26 13:16:40	administrator	SCSWS2000	Cartridge-case Repository	0		User logout
2005-09-26 13:33:00	expert-1	SCSWS2000	Bullets Repository	0		Bullet specimen add
2005-09-26 13:33:00	expert-1	SCSWS2000	Bullets Repository	0		Bullet mark: add
2005-09-26 13:35:25	CondoService	SCSWS2000	CondoService	0		Specimen unblock
2005-09-26 13:44:54	administrator	SCSWS2000	Cartridge-case Repository	0		User logout
2005-09-26 14:36:11	mic	SCSWS2000	Cartridge-case Repository	0		User logout
2005-09-26 14:40:34	mic	SCSWS2000	Cartridge-case Repository	0	U: mic, P:*****	User login
2005-09-26 15:02:44	administrator	SCSWS2000	Cartridge-case Repository	0	U: administrator, P:*****	User login
2005-09-26 16:32:08	mic	SCSWS2000	Cartridge-case Repository	0	U: mic, P:*****	User login
2005-09-26 17:21:24	CondoService	SCSWS2000	CondoService	0		Specimen unblock
2005-09-26 19:14:27	administrator	SCSWS2000	Cartridge-case Repository	0		User logout
2005-09-26 19:36:21	administrator	SCSWS2000	Cartridge-case Repository	0	U: administrator, P:*****	User login
2005-09-26 19:52:23	administrator	SCSWS2000	Cartridge-case Repository	0	U: administrator, P:*****	User login
2005-09-27 14:58:10	administrator	SCSWS2000	Cartridge-case Repository	0		User logout
2005-09-27 15:44:19	administrator	SCSWS2000	Cartridge-case Repository	0		User logout
2005-09-27 15:54:51	mic	SCSWS2000	Cartridge-case Repository	0		User logout
2005-09-27 16:15:22	administrator	SCSWS2000	Cartridge-case Repository	0	U: administrator, P:*****	User login
2005-09-27 16:35:59	administrator	SCSWS2000	Cartridge-case Repository	0		User logout
2005-09-27 18:02:20	administrator	SCSWS2000	Cartridge-case Repository	0		User logout
2005-09-27 18:57:06	administrator	SBC-SERVER-2...		2324		Self ejector set
2005-09-27 19:42:09	administrator	SCSWS2000	Cartridge-case Repository	0		User logout
2005-09-28 16:48:33	administrator	SCSWS2000	Cartridge-case Repository	0		User logout
2005-09-28 19:02:22	expert-3	CONDOR-DA53	TeleMicroscope	0	U: expert-3, P:*****	User login

### ***Install filter***

It allows to perform a selection of log records according to specified conditions.

The list of conditions is generated by the operator.

Conditions by date/time are combined using AND.

Conditions by a single column are formed using OR.

Conditions by different columns are formed using AND.

If no condition is specified by a column, it implies “All values by this column”.

**Add** key – adds a condition (conditions) into the list of conditions.  
Simultaneously several conditions on different fields can be added.

**Delete** key – deletes the condition being selected from the list of conditions.

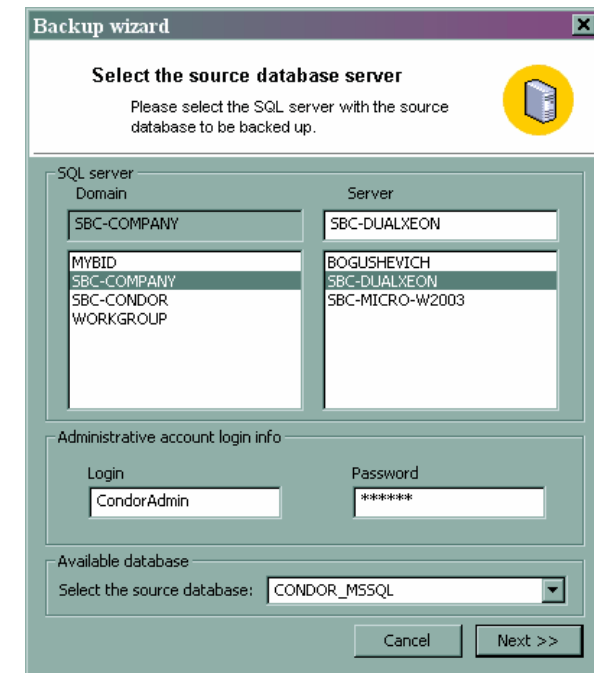
**Clear list** key – clears the list of conditions.

**OK** key – sets a specimen for the log according to the conditions fixed and closes the dialogue.

**Cancel** key - closes the dialogue without setting the specimen.

### **Database Backup mode**

The **Database Backup mode** is designed for saving information in the form of a backup copy on another server or on removable storage media. (For correct conduction of the copying process, it is necessary to make the **Backup** folder on the receiving server generally accessible with a possibility of writing of the Administrator Group into it). The access to this mode is carried out by pressing the **Data backup** key in the main program window.



The following will be displayed in the window:

- List of domains and workgroups in the local area network.
- List of servers in the local area network relating to the domain or workgroup being selected.
- Information about the administrator account for connection with the server being selected:
  - Login – account name;
  - Password – account password.

- **Check files integrity** field – indicates the necessity of checking files relating to the bullet file.
- Group of elements relating to integrity check of the cartridge case file
  - **Cartridge cases** field – indicates the necessity of checking of the cartridge case file;
  - **Check DB integrity** field – indicates the necessity of checking database records relating to the cartridge case file;
  - **Check files integrity** field – indicates the necessity of checking files relating to the cartridge case file.

Mark those options, which integrity you want to check and press **Start**.

**Set filter**

[User]='Administrator'  
 [WS]='scsiws2000'  
 [DT]>'08-11-05 13:01:57'

Conditions

Date/Time	>	11.08.2005	17.11.2005
User	=	Administrator	
Workstation	=	scsiws2000	
Application	=		
Operation	=		
Result	=		

Add  
 Remove  
 Clear  
 OK  
 Cancel

### ***Reset filter***

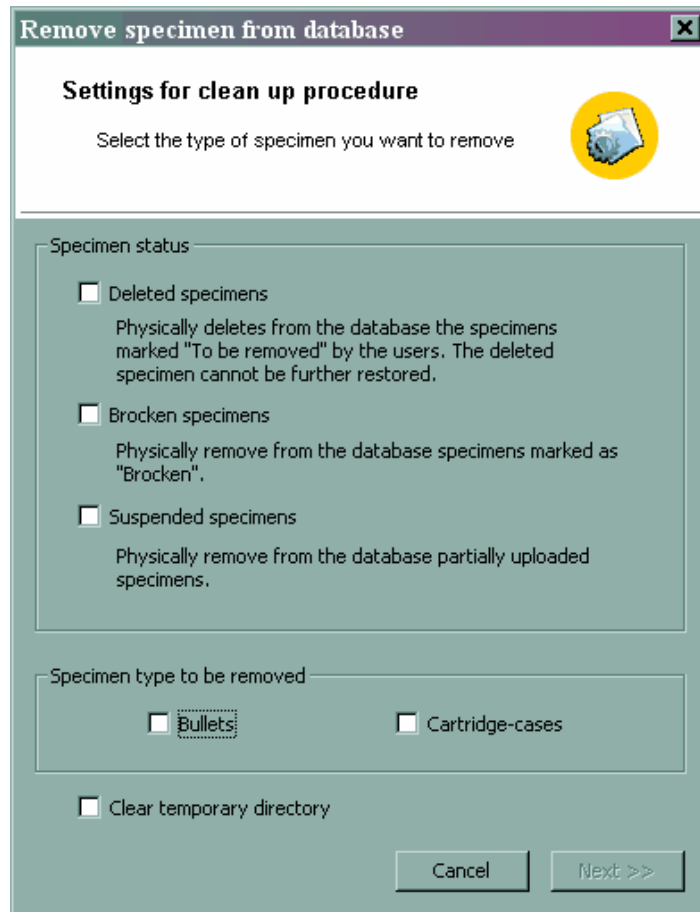
It performs the specimen reset and displays the whole log in the window.

### ***Close***

It finishes work in the **Log** mode and closes the corresponding window. Select the **Close** action in the **File** menu item.

## Removed specimens mode

It provides physical removal of Bullet file and Cartridge case file specimen accounts from the database marked for removal by complex operators as well as specimens being damaged or partially loaded. It is activated by pressing the **Removed specimens** key in the main window: in doing it, it is necessary to select a specimen type (from the Bullet file or Cartridge case file) as well as specimen type for control.

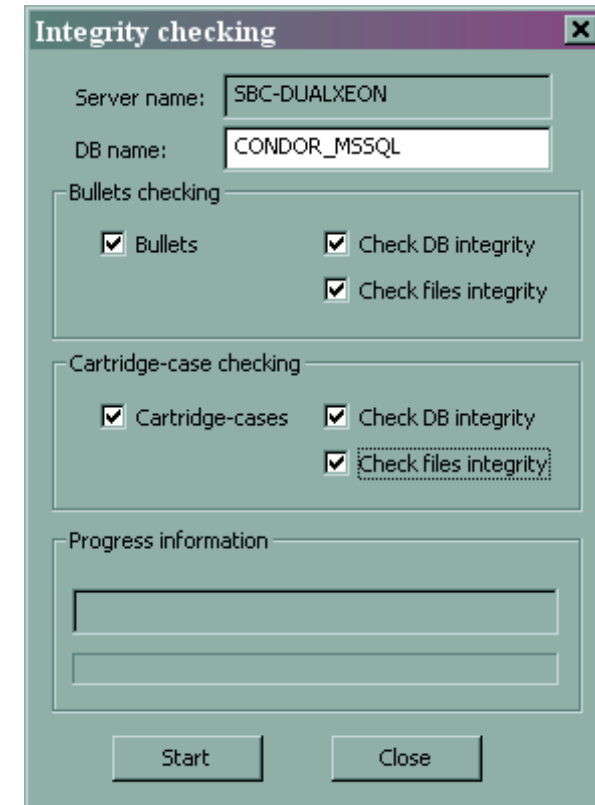


Select the specimen type to be subject to removal:

- Deleted specimens field – specimens marked as deleted;

## Integrity Check mode

The Integrity Check mode is designed for checking the contents of databases and storage directories for conformity with each other. In order to start the mode, press the **Integrity check** key in the main program window.



The following elements will be displayed in the window:

- Group of elements relating to integrity check of the bullet file
  - **Bullets** field– indicates the necessity of checking of the bullet file;
  - **Check DB integrity** field – indicates the necessity of checking database records relating to the bullet file;



## Blocked Specimens mode

During operation of the complex, a situation may arise when upon termination of editing of a specimen no unblocking of this specimen has occurred.

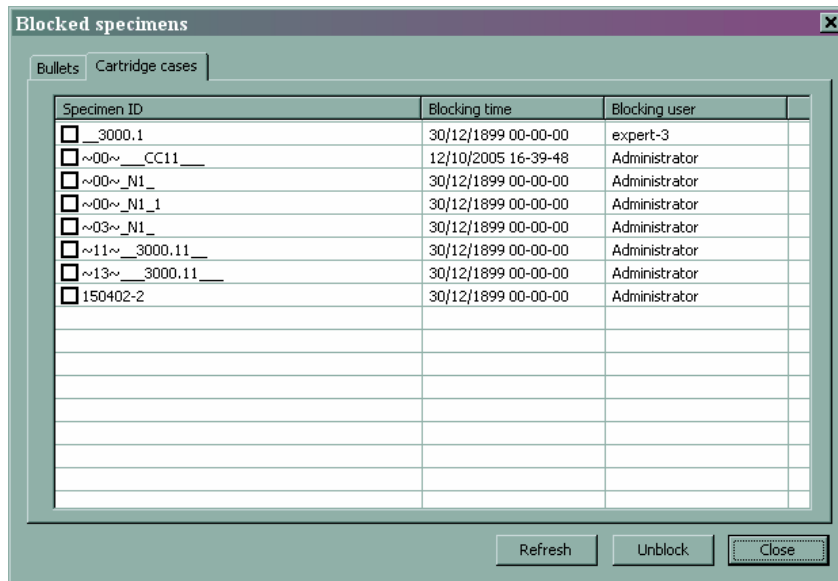
This mode is designed for viewing and releasing blockings from specimens, which have been recorded but have not been unblocked for some reason. It is possible to work with two specimen types : Bullet file and Cartridge case file.

In order to release a blocking, select the required specimens and press the **Unblock** key in the window.

Press the **Refresh** key to update information.

Press the **Close** key to exit from the mode.

The mode operation window is given below:



- Broken specimens field – damaged specimens (as a result of database damage);
  - Suspended specimens field – partially loaded specimens;
  - Groups of elements indicating the type of specimens to be subject to removal:
    - Bullets – bullets;
    - Cartridge cases – shells;
  - Clear temporary directory field– clearing of temporary directory
- Cancel key – cancel and exit from the mode;
- Next >> key – transfer to the next step.

After pressing the **Next>>** key, there is an opportunity to specify a temporary criterion for selecting specimens to be removed.

The window of operation being executed is given below:



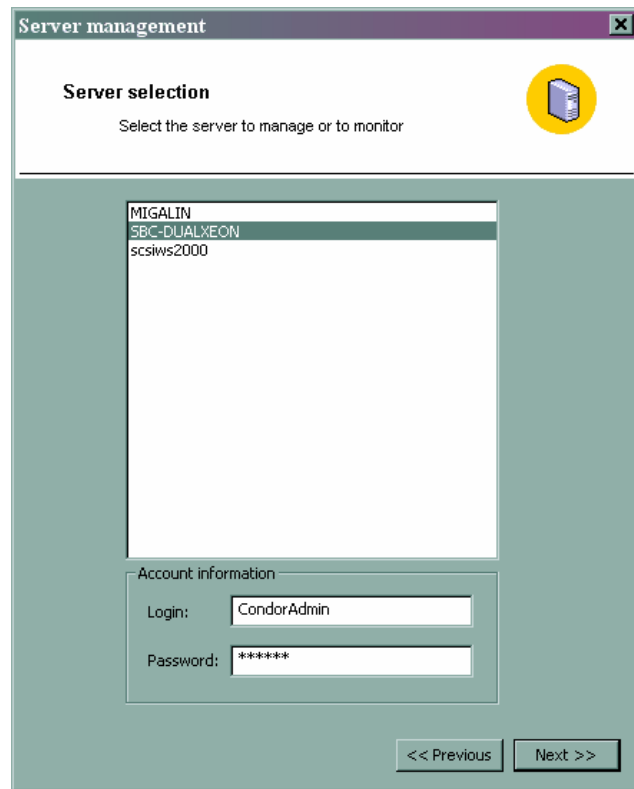
## Server Management mode

It provides management, configuring and monitoring of the correlation server.

In order to select a server for operation, press the **Manage server** key in the main window, select a server type and press «**Next**>>».

The current parameter values and control keys are displayed in the window:

- Group of elements determining the workstation configuration
  - **Set the current IP address to registry** – records the current workstation's IP address in the register;
  - **Set the log mode on** – sets a mode for logging of all the operation being taken;
  - **Type of workstation**
    - **LAN workstation** – workstation being within the limits of a single local area network;
    - **Remote workstation** – remote workstation connected to the local area network.

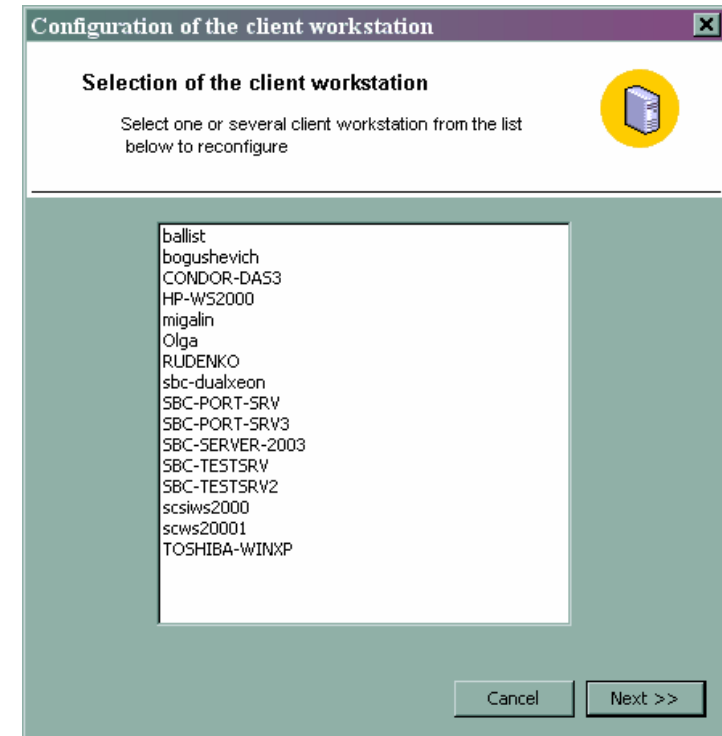


The following will be displayed in this window:

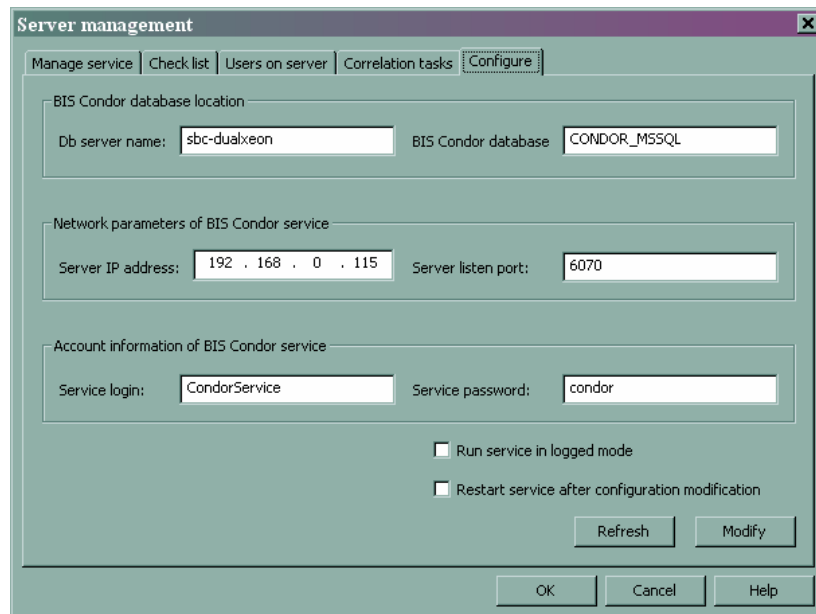
- List of servers being available;
- Group of elements relating to the account information
  - Login – account name;
  - Password – account password;
- <<Previous key – return to selection of the server type;
- Next key – transfer to the next step.

## Client Configuring mode

The Client Configuring mode provides remote viewing and modification of user workplace parameters. In order to select the mode, press the **Configure clients** key in the main program window. Then select one or several workstations and press **Next >>**



The window for viewing and modification of parameters is given below:



The current parameter values and control keys are displayed in the window:

- Group of elements indicating the database location
  - **DB server name** – server name;
  - **BIS Condor database** – database name.
- Group of elements determining network parameters
  - **Server IP address** – IP address of the server;
  - **Server listen port** – server listen port number.
- Group of elements relating to the complex server service
  - **Service login** – name of the server service account;
  - **Service password** – password of the server service account.
- **Run service in logged mode** field – serves for indication to the server service to work in the mode of logging of all the actions taken.
- **Restart service after configuration modification** field – determines the necessity of server service reboot after modification of any data.
- **Modify** – save the changes made;
- **Refresh** – update the values.

## Service management

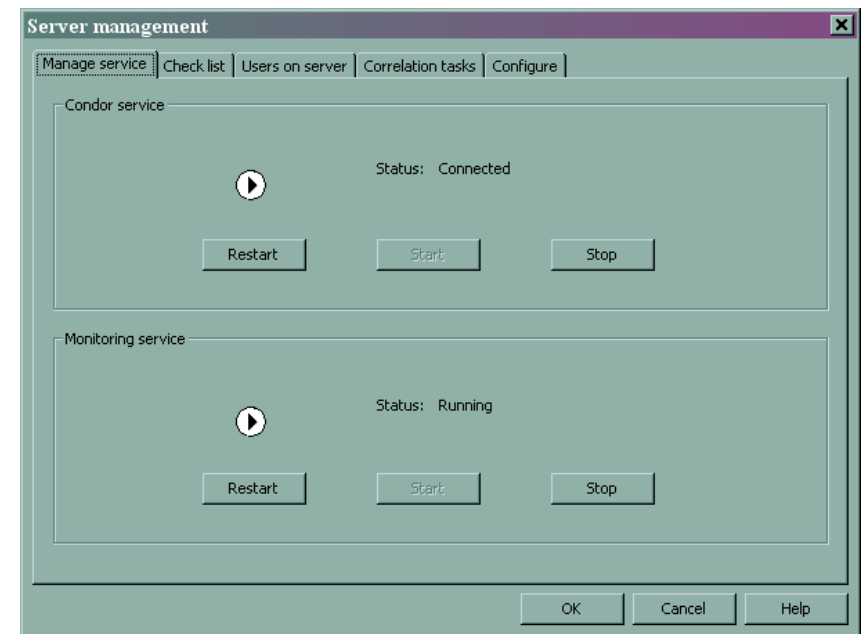
**Manage service** tab provides management of maintenance services of the complex. The service status and control keys will be displayed in the window:

**Restart** – reboots the service;

**Start** – starts the service;

**Stop** – stops the service.

The program window is given below:



## Users

**Users on server** tab provides viewing the users performing correlation on the current server. The list of users and control keys are displayed in the window:

**Drop user** – disconnect a user;

**Refresh** - update information.

The program window is given below:

